

Town of Brewster, MA

Zoning Districts Map

Legend

Zoning Boundary

Zoning Designation

Water

Transmission Lines

Roads

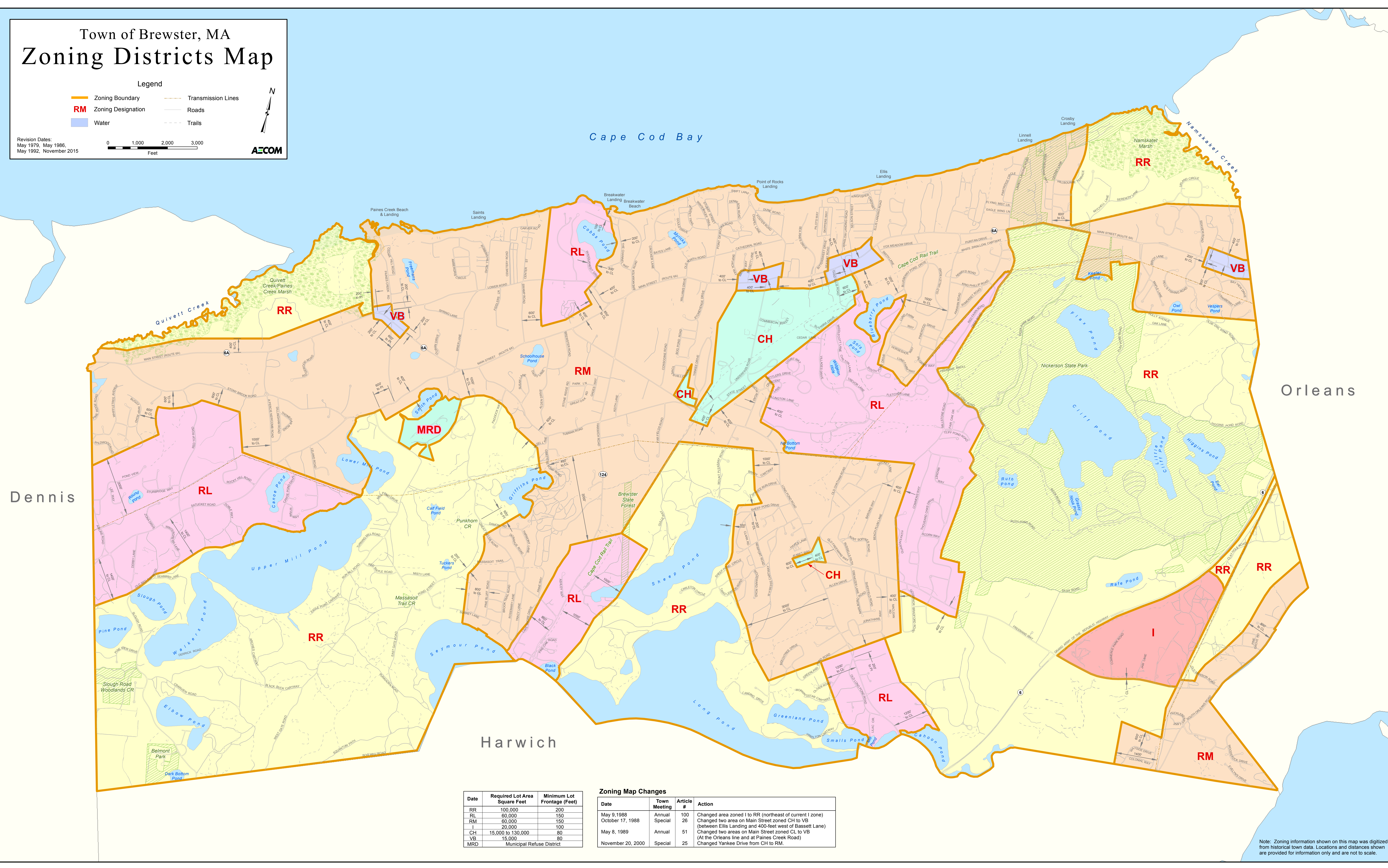
Trails

0 1,000 2,000 3,000

Feet

Revision Dates:
May 1979, May 1986,
May 1992, November 2015

AECOM



Date	Required Lot Area Square Feet	Minimum Lot Frontage (Feet)
RR	100,000	200
RL	60,000	150
RM	60,000	150
I	20,000	100
CH	15,000 to 130,000	80
VB	15,000	80
MRD	Municipal Refuse District	

Zoning Map Changes

Date	Town Meeting	Article #	Action
May 9, 1988	Annual	100	Changed area zoned I to RR (northeast of current I zone)
October 17, 1988	Special	26	Changed two area on Main Street zoned CH to VB (between Ellis Landing and 400-foot west of Bassett Lane)
May 8, 1989	Annual	51	Changed two areas on Main Street zoned CL to VB (At the Orleans line and at Paines Creek Road)
November 20, 2000	Special	25	Changed Yankee Drive from CH to RM.

Note: Zoning information shown on this map was digitized from historical town data. Locations and distances shown are provided for information only and are not to scale.