



# TOWN OF BREWSTER



## STORMWATER MANAGEMENT PLAN UPDATE JUNE 2023



## TABLE OF CONTENTS

SECTION	PAGE NO.
<b>1. INTRODUCTION .....</b>	<b>1</b>
1.1 Stormwater Regulation .....	2
1.2 Permit Program Background .....	2
1.3 Stormwater Management Plan (SWMP) Description .....	2
1.4 Town Specific MS4 Background .....	2
<b>2. SWMP COMPONENTS .....</b>	<b>3</b>
2.1 Parties Involved in Implementation .....	3
2.2 Documentation Regarding Endangered Species .....	3
2.3 Documentation Regarding Historic Properties .....	3
2.4 Documentation Regarding Discharges .....	3
2.5 Sanitary Sewer Overflow (SSO)/Septic Overflow Inventory .....	4
2.6 IDDE Program and Bylaws .....	4
2.7 Sediment and Erosion Control Procedures .....	4
2.8 Public Drinking Water Supply Sources Protection .....	4
2.9 Activities to Monitor Discharges .....	4
2.10 Annual Program Evaluation .....	4
2.11 Annual Reports .....	4
<b>3. MINIMUM CONTROL MEASURES .....</b>	<b>5</b>
3.1 MCM 1: Public Education and Outreach .....	5
3.2 MCM 2: Public Involvement and Participation .....	5
3.3 MCM 3: Illicit Discharge and Detection Elimination .....	5
3.3.1 Background .....	5
3.3.2 Best Management Practices .....	5
3.3.2.1 Legal Authority.....	5
3.3.2.2 SSO Inventory.....	5
3.3.2.3 Storm Sewer System Map .....	6
3.3.2.4 Written IDDE Program Development..	6
3.3.2.5 Implement Program.....	7

3.3.2.6 Employee Training.....	7
3.3.2.7 Dry Weather Screening .....	7
3.3.2.8 Conduct Wet Weather Screening.....	7
3.3.2.9 Conduct Ongoing Screening .....	7
3.3.2.10 IDDE Regulations .....	7
<b>3.4 MCM 4: Construction Site Stormwater Runoff Control .....</b>	<b>7</b>
3.4.1 Background .....	7
3.4.2 Best Management Practices .....	7
3.4.2.1 Site Inspection and Enforcement of Erosion and Sediment Control Measures.....	8
3.4.2.2 Site Plan Review .....	8
3.4.2.3 Erosion and Sediment Control Ordinance .....	8
3.4.2.4 Waste Control .....	8
3.4.2.5 Pre-Construction/Coordination Management .....	8
<b>3.5 MCM 5: Post-Construction Stormwater Management in new development and Redevelopment .....</b>	<b>9</b>
3.5.1 Background .....	9
3.5.2 Best Management Practices .....	9
3.5.2.1 Post-Construction Ordinance .....	9
3.5.2.2 As-Built Plans for On-Site Stormwater Control .....	9
3.5.2.3 Retrofit Inventory and Priority Ranking .....	9
3.5.2.4 Allow Green Infrastructure .....	10
3.5.2.5 Street Design and Parking Lot Guidelines .....	10
3.5.2.6 Stormwater Management for New Development and Redevelopment....	10
<b>3.6 MCM 6: Good Housekeeping and Pollution Prevention for Permittee Owned Operations .....</b>	<b>10</b>
3.6.1 Background .....	10
3.6.2 Best Management Practices .....	10

3.6.2.1	O&M Procedures .....	10
3.6.2.2	Inventory Town Facilities and Equipment.....	10
3.6.2.3	Infrastructure O&M.....	11
3.6.2.4	SWPPP .....	11
3.6.2.5	Catch Basin Cleaning .....	11
3.6.2.6	Street Sweeping Program.....	12
3.6.2.7	Road Salt Use Optimization Program .....	12
3.6.2.8	Inspections and Maintenance of Stormwater Treatment Structures .....	12
3.6.2.9	Massachusetts Department of Transportation.....	12
<b>4.</b>	<b>WATER QUALITY BASED REQUIREMENTS.....</b>	<b>13</b>
4.1	Background .....	13
4.2	Permit Requirements .....	13
4.2.1	Public Education and Outreach .....	13
4.2.1.1	Bacteria and Pathogens.....	13
4.2.1.2	Nitrogen .....	13
4.2.1.3	Phosphorus.....	13
4.2.2	Stormwater Management in New Development and Redevelopment .....	14
4.2.3	Good Housekeeping and Pollution Prevention .....	14
4.2.4	Illicit Discharge .....	14

4.2.5	Additional Requirements (Nitrogen) .....	14
4.2.6	Additional Requirements (Phosphorus) .....	14
4.3	Impaired Waterbodies .....	14
<b>5.</b>	<b>CERTIFICATION .....</b>	<b>15</b>

## APPENDICES

<b>APPENDIX A:</b>	<b>MA MS4 HYPERLINKS AND REFERENCES</b>
<b>APPENDIX B:</b>	<b>NOTICE OF INTENT</b>
<b>APPENDIX C:</b>	<b>PERMIT SCHEDULE</b>
<b>APPENDIX D:</b>	<b>ENDANGERED SPECIES AND CRITICAL HABITATS PROTECTION DOCUMENTS</b>
<b>APPENDIX E:</b>	<b>HISTORIC PROPERTIES DOCUMENTS</b>
<b>APPENDIX F:</b>	<b>NEW OR INCREASED DISCHARGES TRACKING LOG</b>
<b>APPENDIX G:</b>	<b>SSO INVENTORY</b>
<b>APPENDIX H:</b>	<b>CURRENT STORMWATER BYLAWS</b>
<b>APPENDIX I:</b>	<b>2018 ANNUAL REPORT SELF EVALUATION</b>
<b>APPENDIX J:</b>	<b>MINIMUM CONTROL MEASURES BMPS</b>
<b>APPENDIX K:</b>	<b>STORMWATER MANAGEMENT PLAN REVISION TRACKING FORM</b>
<b>APPENDIX L:</b>	<b>SEPARATE STORM SEWER SYSTEM MAP</b>
<b>APPENDIX M:</b>	<b>IMPAIRED WATERS AND SPECIAL RESOURCE WATERS</b>

# 1. INTRODUCTION

## WHY IS STORMWATER IMPORTANT?

Stormwater runoff frequently transports pollutants through municipal separate storm sewer systems (MS4s), where it is discharged, often untreated, into local waterbodies. MS4s have been constructed in developed areas to reduce the risk of flooding and damage to our infrastructure. Unfortunately, MS4s can carry pollution present in stormwater runoff during rain events and snow melt, including oil, trash, nutrients, pet waste, and any other materials found on lawns, streets, and parking lots.

In the Town of Brewster (Town), stormwater discharges that are conveyed by the MS4 are regulated under the “General Permit for Stormwater Discharges from Small Municipal Separate Storm Sewer Systems in Massachusetts” (MS4 General Permit, Permit). The MS4 General Permit is issued and managed jointly by the U.S. Environmental Protection Agency (EPA) and the State of Massachusetts Department of Environmental Protection (MassDEP).

## WHAT DOES BREWSTER HAVE TO DO TO COMPLY WITH THE MS4 GENERAL PERMIT?

The Town of Brewster has had MS4 General Permit coverage since 2003 and obtained permit coverage under the reissued MS4 Permit that became effective July 1, 2018 (Permit No. MAR041096). As part of the permitting requirements, Brewster is required to develop a written Stormwater Management Plan (SWMP). This SWMP (or Plan) is a reference document that guides the Town’s implementation of requirements within the Permit. The Town is required to keep records of, and report on, the activities and measures that are implemented and consistent with this Plan. MS4 General Permit requirements are summarized as follows:



**Implement** public education programs to help Town residents, business owners, and developers understand their role in keeping stormwater clean.



**Engage** the public in decision-making throughout the program.



**Find** and address failed septic systems or leaky or unauthorized sanitary sewer lines that might be discharging into the drainage system.



**Ensure** that construction projects do not pollute runoff with sediments and debris.



**Ensure** that new development and redevelopment control and treat runoff before it leaves the property.



**Engage** in pollution prevention actions like road and parking area best practices (cleaning drainage systems and sweeping pavements), and ensure that municipal activities like vehicle washing, lawn maintenance, and materials storage do not contribute to stormwater pollution.

The Permit Year (PY) reference within this document corresponds to each regulatory year starting on July 1, 2018. Updates to the original version of this SWMP, dated June 2019, and prepared by Environmental Partners Group, of Hyannis, Massachusetts, have been incorporated into this document to reflect the Town of Brewster's stormwater management program updates and achievements through PY5 (ending June 30, 2023). Additional information related to the progress of the stormwater management program is provided in the MS4 Annual Report that is submitted to the US EPA and MassDEP in September each year. A revision log tracking these updates is located in **Appendix K**.

A hyperlink to the original 2016 MS4 General Permit was included in **Appendix A** of the original version of this SWMP. On December 7, 2020, changes to the Permit were issued; these changes became effective on January 6, 2021. The modified 2016 MS4 General Permit and its appendices can be accessed on the EPA's website, at <https://www.epa.gov/npdes-permits/massachusetts-small-ms4-general-permit>.

**Appendices B, C, D, E, F, G, I, and J** remained unchanged since the original version of this SWMP was published. Refer to the original SWMP document to view these appendices.

## **1.1 STORMWATER REGULATION**

No updates.

## **1.2 PERMIT PROGRAM BACKGROUND**

No updates.

## **1.3 STORMWATER MANAGEMENT PLAN (SWMP) DESCRIPTION**

No updates.

## **1.4 TOWN SPECIFIC MS4 BACKGROUND**

No updates.

## 2. SWMP COMPONENTS

### 2.1 PARTIES INVOLVED IN IMPLEMENTATION

Table 2-1 was updated to reflect changes in personnel involved with implementation of the Town's stormwater management program.

**Table 2-1: Responsible Parties for Stormwater Program Implementation**

Name	Title	Department
<b>Griffin Ryder</b>	Superintendent	Department of Public Works
<b>Amy von Hone</b>	Health Director	Health Department
<b>Davis Walters</b>	Building Commissioner	Building Department
<b>Jon Idman</b>	Town Planner	Planning/Zoning Department
<b>Kathleen Lambert</b>	IT Director	IT Department
<b>Paul Anderson</b>	Superintendent	Water Department
<b>David Bennett</b>	Chair	Board of Health
<b>Bill Grafton</b>	Conservation Administrator	Conservation Commission
<b>Amanda Bebrin</b>	Chair	Planning Board

### 2.2 DOCUMENTATION REGARDING ENDANGERED SPECIES

No updates.

### 2.3 DOCUMENTATION REGARDING HISTORIC PROPERTIES

No updates.

### 2.4 DOCUMENTATION REGARDING DISCHARGES

No updates.

## **2.5 SANITARY SEWER OVERFLOW (SSO)/SEPTIC OVERFLOW INVENTORY**

No updates.

## **2.6 IDDE PROGRAM AND BYLAWS**

No updates.

## **2.7 SEDIMENT AND EROSION CONTROL PROCEDURES**

No updates.

## **2.8 PUBLIC DRINKING WATER SUPPLY SOURCES PROTECTION**

No updates.

## **2.9 ACTIVITIES TO MONITOR DISCHARGES**

No updates.

## **2.10 ANNUAL PROGRAM EVALUATION**

The Town of Brewster conducts annual evaluations of its program compliance, the appropriateness of its identified BMPs, progress toward meeting upcoming Permit requirements, and progress towards achieving its identified measurable goals, which include reducing the discharge of pollutants to the maximum extent practicable ("MEP"). The Town documents the findings of these annual evaluations in their MS4 Program annual report, submitted to the EPA and MassDEP by September 28<sup>th</sup>.

Changes to the Town's stormwater permit compliance program do not need to be updated in their NOI, however, this information will be included in the Town's annual reports and SWMP updates, as needed.

## **2.11 ANNUAL REPORTS**

The MS4 Annual Report is due by September 29, 2023. Annual reports are available for public access on the Town's and the EPA's website.

### 3. MINIMUM CONTROL MEASURES

The following subsections have been updated to reflect the current status of the Town's MS4 General Permit program.

#### 3.1 MCM 1: PUBLIC EDUCATION AND OUTREACH

No updates.

#### 3.2 MCM 2: PUBLIC INVOLVEMENT AND PARTICIPATION

No updates.

#### 3.3 MCM 3: ILLICIT DISCHARGE AND DETECTION ELIMINATION

The following subsections have been updated to reflect the current status of the Town's MS4 General Permit IDDE program.

##### 3.3.1 Background

No updates.

##### 3.3.2 Best Management Practices

No updates.

###### 3.3.2.1 Legal Authority

The Town adopted *Chapter 115 – Illicit Connections and Discharges* to its Town Bylaws on November 7, 2011.

*This BMP has been updated to include a specific reference to the adoption of Town regulations relating to site inspection and erosion and sediment control measures.*

###### 3.3.2.2 SSO Inventory

No updates.



### 3.3.2.3 Storm Sewer System Map

The Town has developed Separate Stormwater Sewer System and Impaired Waters Maps consistent with the requirements of Part 2.3.4.5.a of the MS4 General Permit. The maps, provided in **Appendix L** and **Appendix M** of this SWMP Update, include the following information:

- Outfalls and receiving waters
- Open channel conveyances
- Interconnections with other MS4s and other storm sewer systems
- Municipally-owned stormwater treatment structures
- Waterbodies identified by name and indication of all use impairments per the most recent Massachusetts Integrated List of Waters report
- Initial catchment delineations
- Drain pipes, manholes, and catch basins

The maps were updated in PY5 to incorporate changes in the Draft 2022 Massachusetts Integrated List of Waters and mapping updates resulting from the Town's dry weather outfall screening and catchment investigation activities.

*This BMP has been updated to provide the most current information regarding the contents of the Town's Separate Storm Sewer System and Impaired Waters Maps.*

### 3.3.2.4 Written IDDE Program Development

The Town developed a written IDDE Program Plan in December 2019 consistent with the requirements of Part 2.3.4.6 of the MS4 General Permit. The IDDE Program Plan includes the following information:

- Brewster's Legal Authority to implement the IDDE Program Plan
- Stormwater System Mapping
- Assessment and Priority Ranking of Outfalls
- Written Procedures for:
  - Dry Weather Outfall Screening
  - Wet Weather Outfall Screening
  - Catchment Investigations
  - Illicit Discharge Source Isolation and Confirmation
  - Illicit Discharge Abatement
- IDDE Training and Progress Tracking Requirements

*This BMP has been updated to reflect the completion of the IDDE Program Plan. A copy of the IDDE Program Plan is available at the Department of Public Works.*

### **3.3.2.5 Implement Program**

See IDDE program implementation updates in Section 3.3.2.7 of this SWMP Update, below.

### **3.3.2.6 Employee Training**

No updates.

### **3.3.2.7 Dry Weather Screening**

In July 2021, the Town completed dry weather inspections of their outfalls and in May 2023 the Town completed dry weather catchment investigations and supplementary outfall screenings in outfall locations not located during the July 2021 inspections. The Town will report on the supplementary outfall screening and catchment investigation results in their PY5 Annual Report submittal.

*This BMP has been updated to reflect the completion of the Town's dry weather outfall screening and catchment investigation programs. Copies of the results of the dry weather outfall screenings and catchment investigations are available at the Department of Public Works.*

### **3.3.2.8 Conduct Wet Weather Screening**

No updates.

### **3.3.2.9 Conduct Ongoing Screening**

No updates.

### **3.3.2.10 IDDE Regulations**

No updates.

## **3.4 MCM 4: CONSTRUCTION SITE STORMWATER RUNOFF CONTROL**

### **3.4.1 Background**

No updates.

### **3.4.2 Best Management Practices**

The following subsections have been updated to reflect the current status of the Town's MS4 General Permit construction site stormwater management

program.

#### **3.4.2.1 Site Inspection and Enforcement of Erosion and Sediment Control Measures**

The Town adopted *Chapter 272 – Stormwater Management* to its Town Bylaws on November 15, 2021, and adopted its *Stormwater Management Regulations* on February 23, 2022. These regulations enforce site inspections and the use of erosion and sediment control measures, consistent with the requirements of Part 2.3.5.c of the MS4 General Permit.

*This BMP has been updated to reflect the adoption of Town regulations relating to site inspection and erosion and sediment control measures.*

#### **3.4.2.2 Site Plan Review**

The Town adopted *Article XII – Site Plan Review* to its Zoning Bylaw on May 2, 2011.

No updates.

#### **3.4.2.3 Erosion and Sediment Control Ordinance**

The Town adopted *Chapter 272 – Stormwater Management* to its Town Bylaws on November 15, 2021, and adopted its *Stormwater Management Regulations* on February 23, 2022. These regulations enforce the use of erosion and sediment control measures, consistent with the requirements of Part 2.3.5.c of the MS4 General Permit.

*This BMP has been updated to reflect the adoption of Town regulations relating to erosion and sediment control measures.*

#### **3.4.2.4 Waste Control**

The Town's Board of Health adopted *Brewster Recycling Center Regulations* on November 26, 2013. These regulations prohibit the disposal of hazardous waste at the Brewster Recycling Center. The Towns of Brewster, Harwich, and Chatham, Massachusetts host six household hazardous waste collection days at the Harwich Transfer Station between May and October of each year.

*This BMP has been updated to reflect the institution of the Town's household hazardous waste collection days.*

#### **3.4.2.5 Pre-Construction/Coordination Management**

No updates.

## **3.5 MCM 5: POST-CONSTRUCTION STORMWATER MANAGEMENT IN NEW DEVELOPMENT AND REDEVELOPMENT**

### **3.5.1 Background**

No updates.

### **3.5.2 Best Management Practices**

The following subsections have been updated to reflect the current status of the Town's MS4 General Permit post-construction stormwater management program.

#### **3.5.2.1 Post-Construction Ordinance**

The Town adopted *Chapter 272 – Stormwater Management* to its Town Bylaws on November 15, 2021, and adopted its *Stormwater Management Regulations* on February 23, 2022. These regulations enforce the post-construction long-term operation and maintenance (O&M) of Stormwater Control Measures (SCMs), consistent with the requirements of Part 2.3.6.a of the MS4 General Permit.

*This BMP has been updated to reflect the adoption of Town regulations relating to the long-term O&M of SCMs.*

#### **3.5.2.2 As-Built Plans for On-Site Stormwater Control**

The Town adopted *Chapter 272 – Stormwater Management* to its Town Bylaws on November 15, 2021, and adopted its *Stormwater Management Regulations* on February 23, 2022. These regulations enforce the submission of as-built plans for SCMs, consistent with the requirements of Part 2.3.6.a.iii of the MS4 General Permit.

*This BMP has been updated to reflect the adoption of Town regulations relating to the submission of as-built plans for SCMs.*

#### **3.5.2.3 Retrofit Inventory and Priority Ranking**

The Town proactively identifies and completes retrofits to Town-owned properties to reduce the frequency, volume, and pollutant loads of stormwater discharges to and from its MS4 through the reduction of impervious area and retrofitting, or installing new, Stormwater Control Measures (SCMs). Several SCMs have recently been constructed that meet MS4 General Permit requirements for retrofits and are summarized in a related inventory.

*This BMP has been updated to reflect the completion of the Town's retrofit inventory. A copy of the retrofit inventory is available at the Department of Public Works.*

#### **3.5.2.4 Allow Green Infrastructure**

The Town has prepared a draft report that assesses their existing regulations related to the feasibility of making green infrastructure practices available.

*This BMP has been updated to reflect the issuance of the draft regulatory assessment report. A copy of this report is available at the Department of Public Works.*

#### **3.5.2.5 Street Design and Parking Lot Guidelines**

The Town has prepared a draft report that assesses their existing regulations related to the effect of street and parking lot guidelines on the creation of impervious cover.

*This BMP has been updated to reflect the issuance of the draft regulatory assessment report. A copy of this report is available at the Department of Public Works.*

#### **3.5.2.6 Stormwater Management for New Development and Redevelopment**

No updates.

### **3.6 MCM 6: GOOD HOUSEKEEPING AND POLLUTION PREVENTION FOR PERMITTEE OWNED OPERATIONS**

#### **3.6.1 Background**

No updates.

#### **3.6.2 Best Management Practices**

The following subsections have been updated to reflect the current status of the Town's MS4 General Permit good housekeeping and pollution prevention program.

##### **3.6.2.1 O&M Procedures**

The Town has developed O&M procedures for parks and open spaces, buildings and facilities, vehicles and equipment, and MS4 infrastructure. These procedures can be accessed at the Department of Public Works.

##### **3.6.2.2 Inventory Town Facilities and Equipment**

The Town has developed an inventory of Town-owned facilities consistent with the requirements of Part 2.3.7.a.ii of the MS4 General Permit. The inventory



includes all municipally owned facilities with the potential for stormwater polluting activities, including, but not limited to:

- Parks and open space
- Buildings where pollutants are exposed to runoff (e.g., schools, town offices, fire stations, garages, etc.)
- Vehicle and equipment storage areas

The inventory can be accessed at the Department of Public Works.

### **3.6.2.3 Infrastructure O&M**

The Town has developed written Operations and Maintenance (O&M) Standard Operating Procedures (SOPs) consistent with the requirements of Part 2.3.7.a of the MS4 General Permit. The objectives of the O&M SOPs are to establish procedures for MS4 infrastructure maintenance that will help reduce the discharge of pollutants from municipally owned facilities. The O&M SOPs include:

- Winter road maintenance procedures targeting minimal use and proper storage of sodium chloride and other salts;
- Catch basin inspection, cleaning, and maintenance procedures, and a plan for optimization of these routine activities;
- Street sweeping and cleaning procedures to ensure all Town-owned roadways are swept at least once per year;
- Management and disposal of catch basin cleanings and street sweepings to avoid discharge into receiving waters; and
- Stormwater treatment structure inspections and maintenance procedures

The O&M SOPs can be accessed at the Department of Public Works.

### **3.6.2.4 SWPPP**

The Town has developed written Stormwater Pollution Prevention Plans (SWPPPs) for the Department of Public Works and Brewster Recycling Center facilities consistent with the requirements of Part 2.3.7.b of the MS4 General Permit. The SWPPPs include:

- Pollution and prevention team
- Description of the facility and identification of potential pollutant sources
- Identification of stormwater controls
- Material exposure prevention, good housekeeping, preventative maintenance, spill prevention and response, erosion and sediment control, management of runoff, salt storage pile or salt-containing pile management, employee training, and maintenance of control measure practices

The SWPPPs can be accessed at the Department of Public Works.

### **3.6.2.5 Catch Basin Cleaning**

No updates.

#### **3.6.2.6 Street Sweeping Program**

No updates.

#### **3.6.2.7 Road Salt Use Optimization Program**

No updates.

#### **3.6.2.8 Inspections and Maintenance of Stormwater Treatment Structures**

No updates.

#### **3.6.2.9 Massachusetts Department of Transportation**

No updates.

## 4. WATER QUALITY BASED REQUIREMENTS

### 4.1 BACKGROUND

No updates.

### 4.2 PERMIT REQUIREMENTS

#### 4.2.1 Public Education and Outreach

##### 4.2.1.1 Bacteria and Pathogens

No updates.

##### 4.2.1.2 Nitrogen

No updates.

##### 4.2.1.3 Phosphorus

The Town of Brewster has decided to proactively undertake the distribution of additional educational messages related to the phosphorus impairments included in the "Draft Massachusetts Integrated List of Waters for the Clean Water Act 2022 Reporting Cycle" (Draft 2022 Integrated List) for the Lower Mill Pond and Walkers Pond watersheds, as summarized in Table 4-1 below. These waterbodies are located within the Town, but not within an area under MS4 General Permit jurisdiction:

**Table 4-1 Additional Educational Messaging**

MS4 Permit Part	Message	Timeframe	Targeted Audiences
<b>Phosphorus Impairment (Appendix H Part II)</b>	Leaf Litter Disposal	Fall (August/September/October)	Residential, businesses, institutions, and commercial facilities
	Proper use and disposal of grass clippings/proper use of fertilizers	March/April/May	Residential, businesses, institutions, and commercial facilities
	Septic system information to septic owners	Annual	Residential, businesses, institutions, and commercial facilities

#### **4.2.2 Stormwater Management in New Development and Redevelopment**

No updates.

#### **4.2.3 Good Housekeeping and Pollution Prevention**

No updates.

#### **4.2.4 Illicit Discharge**

No updates.

#### **4.2.5 Additional Requirements (Nitrogen)**

No updates.

#### **4.2.6 Additional Requirements (Phosphorus)**

In accordance with Appendix H of the MS4 General Permit, the Town of Brewster has developed a Phosphorus Source Identification Report (PSIR) for the Lower Mill Pond and Walkers Pond watersheds. The Town completed a draft PSIR, consistent with the requirements of Appendix H of the MS4 General Permit, in June 2022 and finalized the PSIR in June 2023.

*A copy of the PSIR is available at the Department of Public Works.*

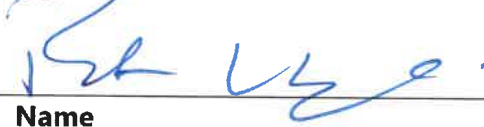
### **4.3 IMPAIRED WATERBODIES**

Table 1 – Impaired Waters, TMDLs, and Impairments, Figure 3 – Town Watersheds, and Figure 4 – Stormwater System Map in the original June 2019 SWMP are based on the “Final Massachusetts Year 2014 Integrated List of Waters.” Table 1, as included in the original SWMP, does not require any updates, as Cape Cod Bay, Mill Pond, and Schoolhouse Pond are not listed as impaired waterbodies in Brewster in the Draft 2022 Integrated List. Figure 3 and Figure 4 have been updated to reflect the Draft 2022 Integrated List and are included in this SWMP update as **Appendix M**, and **Appendix L**, respectively. Future reissuance of the Massachusetts Integrated List of Waters may necessitate additional modifications to this Plan to maintain compliance with applicable requirements.

## 5. CERTIFICATION

"I certify under penalty of law that this document and all attachments were prepared under my direction or supervision in accordance with a system designed to assure that qualified personnel properly gathered and evaluated the information submitted. Based on my inquiry of the person or persons who manage the system, or those persons directly responsible for gathering the information, the information submitted is, to the best of my knowledge and belief, true, accurate, and complete. I am aware that there are significant penalties for submitting false information, including the possibility of fine and imprisonment for knowing violations."

**Signature**



**Name**

**Date**

6/29/23



# Appendices



## APPENDIX A: MA MS4 HYPERLINKS AND REFERENCES



A copy of the original 2016 MS4 General Permit was included in Appendix A of the original version of this SWMP. On December 7, 2020, changes to the Permit were issued; these changes became effective on January 6, 2021. The modified 2016 MS4 General Permit and its appendices can be accessed on the EPA's website, at <https://www.epa.gov/npdes-permits/massachusetts-small-ms4-general-permit>.



## APPENDIX B: NOTICE OF INTENT



No updates.





## APPENDIX C: PERMIT SCHEDULE



No updates.



---

## **APPENDIX D: ENDANGERED SPECIES ACT AND CRITICAL HABITATS PROTECTION DOCUMENTS**



No updates.



## APPENDIX E: HISTORIC PROPERTIES DOCUMENTS





No updates.



## APPENDIX F: NEW OR INCREASED DISCHARGES TRACKING LOG



No updates.



## APPENDIX G: SSO INVENTORY



No updates.



## APPENDIX H: CURRENT STORMWATER BYLAWS



Since the issuance of the Town's original June 2019 SWMP, the Town adopted *Chapter 272 – Stormwater Management* to its Town Bylaws on November 15, 2021, and adopted its *Stormwater Management Regulations* on February 23, 2022. These regulations can be accessed at the following websites:

- Chapter 272 – Stormwater Management: <https://ecode360.com/38600202>
- Stormwater Management Regulations: [https://www.brewster-ma.gov/sites/g/files/vyhlf6286/f/uploads/brewster\\_stormwater\\_management\\_regulations\\_022322.pdf](https://www.brewster-ma.gov/sites/g/files/vyhlf6286/f/uploads/brewster_stormwater_management_regulations_022322.pdf)



## APPENDIX I: 2018 ANNUAL REPORT SELF EVALUATION





No updates.



## APPENDIX J: MINIMUM CONTROL MEASURES BMPS



No updates.



## APPENDIX K: STORMWATER MANAGEMENT PLAN REVISION TRACKING FORM



Revision No.	Revision Date	Section of SWMP	Revision(s) Made/Reasoning
00	6/2019	--	--
01	6/30/2023	2.1	Updated Table 2-1 to reflect changes in personnel involved with implementation of the Town's stormwater management program
		2.10	Revised language to reflect that the Town's annual program evaluations can be found in their MS4 annual reports
		2.11	NEW SECTION: Added language to reflect that the Town's annual reports can be accessed on the Town's and the EPA's websites
		3.3.2.1	Updated subsection to reference the Town's regulation establishing legal authority for its IDDE program
		3.3.2.3	Updated subsection to reflect that the Town's Separate Storm Sewer System and Impaired Waters Maps are included in Appendices L and M, respectively
		3.3.2.4	Updated subsection to reflect that the Town's written IDDE Program Plan was completed in December 2019
		3.3.2.7	Updated subsection to reflect completion of the Town's dry weather outfall screening and catchment investigation programs
		3.4.2.1	Updated subsection to reference the Town's Stormwater Management Bylaw and Regulations
		3.4.2.2	Updated subsection to reference the Town's Site Plan Review Article within its Zoning Bylaw
		3.4.2.3	Updated subsection to reference the Town's Stormwater Management Bylaw and Regulations
		3.4.2.4	Updated subsection to reference the Town's Brewster Recycling Center Regulations
		3.5.2.1	Updated subsection to reference the Town's Stormwater Management Bylaw and Regulations
		3.5.2.2	Updated subsection to reference the Town's Stormwater Management Bylaw and Regulations
		3.5.2.3	Updated subsection to reflect status of retrofit inventory for Town-owned properties
		3.5.2.4	Updated subsection to reflect completion of draft Green Infrastructure Feasibility assessment report
		3.5.2.5	Updated subsection to reflect completion of draft Street and Parking Lot Guidelines assessment report
		3.6.2.1 – 3.6.2.3	Updated subsections to reflect completion of O&M procedures and Town-owned facility inventory
		3.6.2.4	Updated subsections to reflect completion of SWPPPs for the Department of Public Works and Brewster Recycling Center facilities
		4.2.1.3	NEW SECTION: Added language to reflect additional education and outreach program messages related to Lower Mill Pond and Walkers Pond total phosphorus impairments
		4.2.6	NEW SECTION: Added language to reflect that a PSIR is required for the Lower Mill Pond and Walkers Pond watersheds and was completed in June 2023



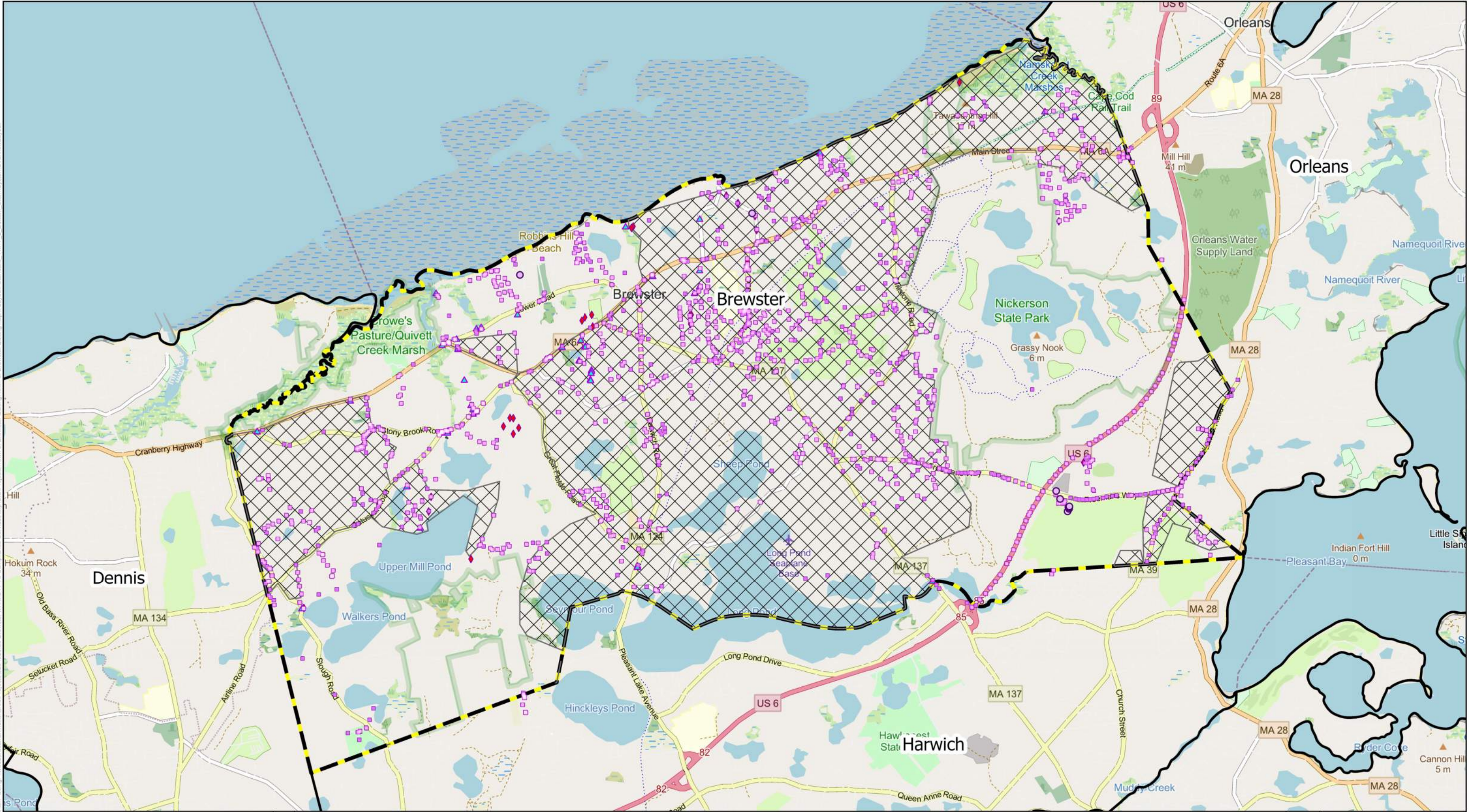
Revision No.	Revision Date	Section of SWMP	Revision(s) Made/Reasoning
		4.3	Updated to reference Draft 2022 Integrated List and updates to Separate Storm Sewer System and Impaired Waters Maps
		Appendix H	Updated to include links to Stormwater Management Bylaw and Regulations adopted after issuance of original SWMP
		Appendix K	NEW SECTION: Added Stormwater Management Plan Revision Tracking Form
		Appendix L	NEW SECTION: Added Separate Storm Sewer System Map to replace Figure 4 – Stormwater System Map in the original SWMP
		Appendix M	NEW SECTION: Added Impaired Waters Map to replace Figure 3 – Town Watersheds in the original SWMP



## APPENDIX L: SEPARATE STORM SEWER SYSTEM MAP



Figure Exported: 6/27/2023 By: N. L. Using: \woodlandsurran\external\Projects\0234820.00 Brewster MA\MSA\_PVS Compliance Services\wp\GIS\Projects\Town of Brewster Editing\1.aprx Layout: Standard 11x17 L Bottom: StormSystemOverviewLayout



# Town of Brewster Stormwater System Overview

Town of Brewster, MA

Legend

- |                            |                   |
|----------------------------|-------------------|
| Storm Drain Manhole        | Storm Drain Pipe  |
| Storm Drain Catch Basin    | Urbanized Area    |
| Storm Drain Outfall        | Brewster Boundary |
| Stormwater Control Measure | Town Boundaries   |



Project #: 0234820.00  
Map Created: June 2023

Third Party GIS Disclaimer: This map is for reference and graphical purposes only and should not be relied upon by third parties for any legal decisions. Any reliance upon the map or data contained herein shall be at the users' sole risk. Data Sources: MassGIS, MassDOT, Town of Brewster, Esri

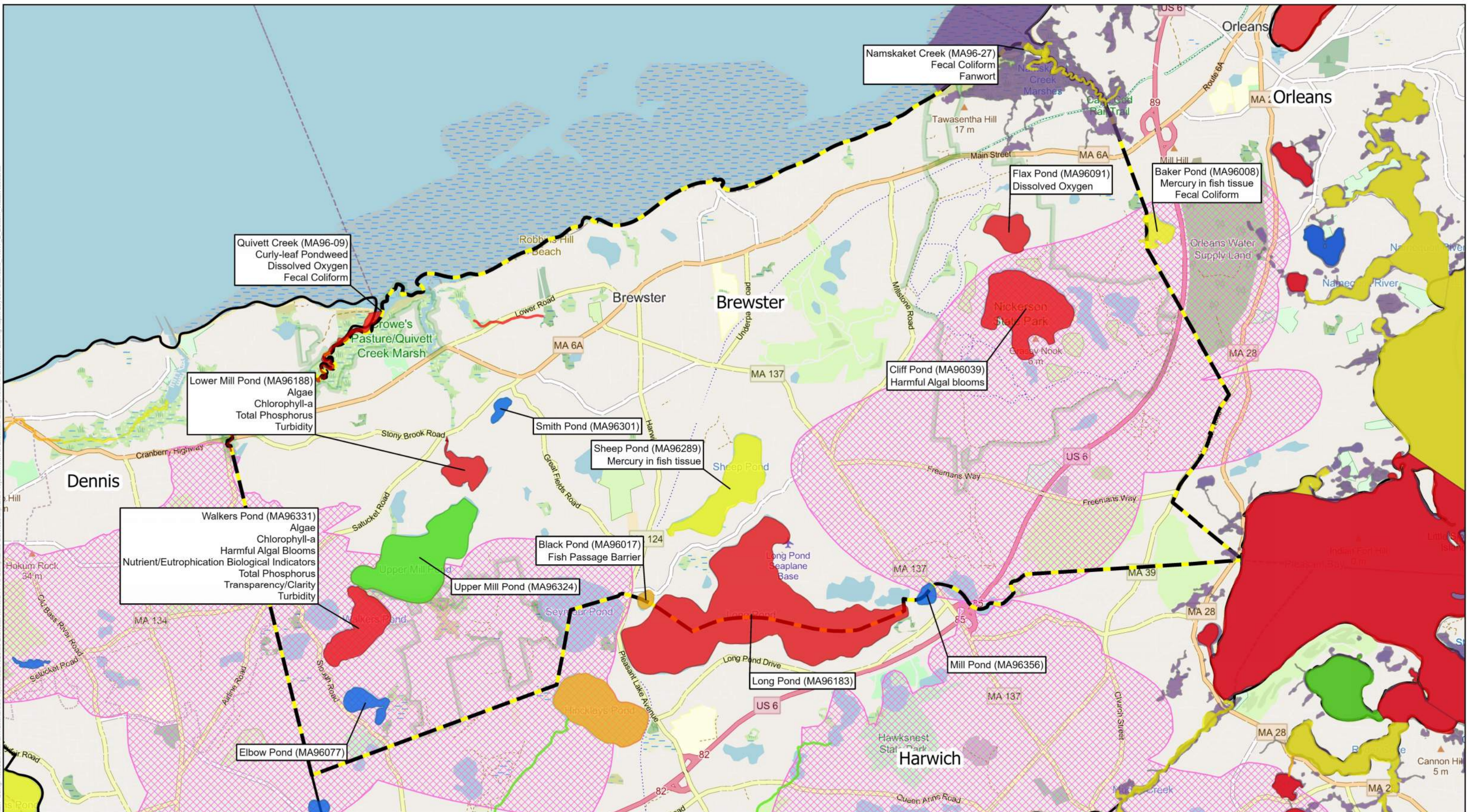




## APPENDIX M: IMPAIRED WATERS AND SPECIAL RESOURCE WATERS



Figure Exported: 6/27/2023 By: N. Landin Using: WoodardCurran.net\shared\Projects\0234820.00 Brewster MA\MSA\_P\5 Compliance Services\wp\GIS\Projects\Town of Brewster Editing\1.aprx Layout: Standard 11x17 L Bottom: WaterResources



# Town of Brewster Water Resources

Town of Brewster, MA

Legend

- Brewster Boundary
- Outstanding Resource Waters
- MassDEP Approved Zone IIs

- Draft 2022 Integrated List Waters - 305 (b)/303(d)**
- Category**
- 2 - Attaining some uses; other uses not assessed
  - 3 - No uses assessed

- 4A - Impaired - TMDL is completed
- 4C - Impairment not caused by a pollutant
- 5 - Impaired - TMDL required



Project #: 0234820.00  
Map Created: June 2023



Third Party GIS Disclaimer: This map is for reference and graphical purposes only and should not be relied upon by third parties for any legal decisions. Any reliance upon the map or data contained herein shall be at the users' sole risk. Data Sources: MassGIS, MassDOT, Town of Brewster, Esri